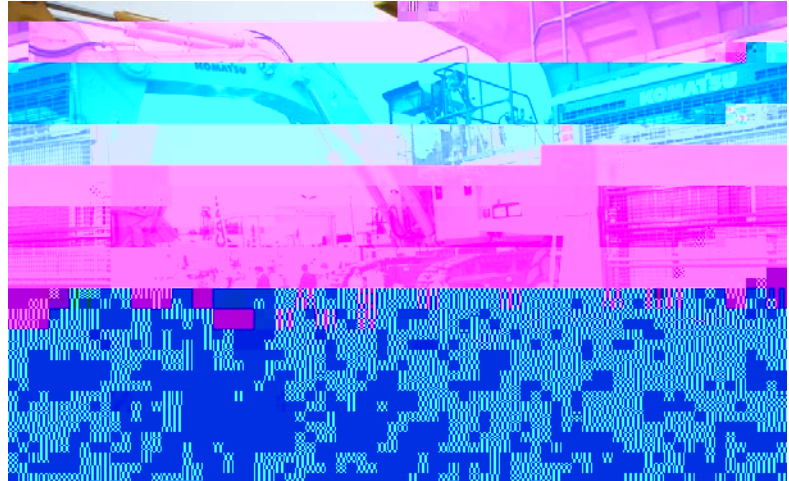


November 23, 2010

## L&T displays Large Mining Machines and Support Strengths at IMME 2010

L&T's Construction & Mining Equipment Business along with its principals, Komatsu Limited, Japan, put up an exemplary show at the International Mining & Machinery Exhibition (IMME) 2010 held from November 10-13, 2010, in Kolkata. Billed as Asia's largest event for the mining industry, IMME 2010 brought in a number of leading players from across the globe to showcase their technological strengths and manufacturing prowess.



*of L&T supplied equipment and one of L&T's esteemed customers. Also seen in the photograph are Mr. S. Raghavan, Mr. S. K. Mitra and personnel from EMTA, Komatsu and L&T.*

Komatsu's PC2000-8 Hydraulic Excavator (200-tonne weight, 12 cu.m. bucket capacity) – the star attraction at the exhibition – is the largest-ever Hydraulic Excavator to be displayed at any exhibition, in the country.

Other equipment on live display at L&T's stall were Komatsu HD785-7 Rear Dump Truck (100-tonne payload capacity) from Komatsu India Pvt. Ltd's Chennai Plant and Scania P380 Tipper – the popular 18.8 cu.m. capacity truck from Sweden. Besides, L&T showcased its product support capabilities for mining



*PC2000-8 Hydraulic Excavator and HD785-7 Rear Dump Truck displayed at L&T stall.*



*Side view of the stall: Scania P380 Tipper on display.*

equipment in a big way by displaying aggregates like reconditioned engine, transmission, pumps and a number of critical spare parts that form the lifeline of the mining equipment. The outdoor stall covered over 930 sq. m. space and had the branding specially done for the occasion.

Mr. J.P. Nayak, President, Machinery & Industrial Products, and Member of the Board, L&T, along with Mr. S. Raghavan, Senior Vice-President, Industrial Products & Machinery and Mr. S.K. Mitra, Executive Vice-President, Construction Machinery Sector, participated in the event along with senior personnel from L&T, Komatsu and Scania.

Key customers from both the public and private sectors